



BLE (AoA)-based **locator and gateway** that provides **highly precise** submeter location accuracy.

VERSION 2.3

## ZENIX LON-2 Quick Start Guide



Contents

- 1. Prerequisite..... 2
- 2. Introduction ..... 2
  - 2.1. Accessory List ..... 2
  - 2.2. Hardware Description ..... 2
- 3. Power using 12 V Adapter..... 3
  - 3.1. POE Injector ..... 4
  - 3.2. POE Switch ..... 4
- 4. Device Status..... 5
- 5. ZENIX LON-2 Configuration..... 5

## 1. Prerequisite

- Make sure that the router or switch that you are using have internet.
- If you are using your own MQTT broker then make sure it is working.
- Make sure that port 1883 is open.

## 2. Introduction

### 2.1. Accessory List

1. 12V - 2A Power Supply
2. Ethernet Cable - Blue/Grey color (POE)
3. Mounting Bracket - Mount product to ceiling/wall

### 2.2. Hardware Description

1. Gateway Status LED
2. Gateway Power LED
3. POE Port
4. USB Power OUT
5. AOA Power LED
6. AOA Status LED
7. Reset Button
8. DC 12V IN
9. Wall Mount bracket
10. Serial Sticker



*Figure 1 ZENIX LON-2 Front View*



Figure 2 ZENIX LON-2 Back View ZENIX LON-2 Installation

### 3. Power using 12 V Adapter

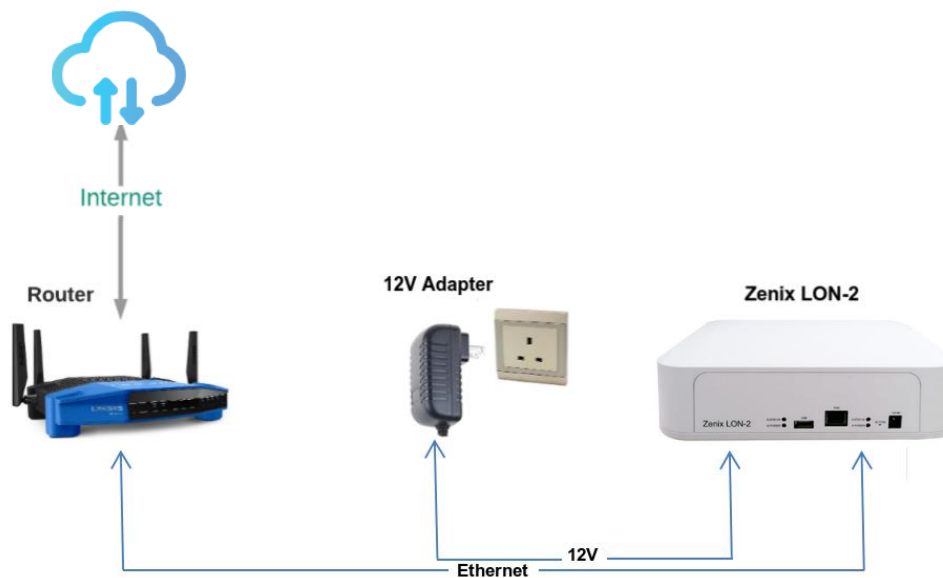


Figure 3 ZENIX LON-2 Wiring using LAN and Power 12V

### 3.1. POE Injector

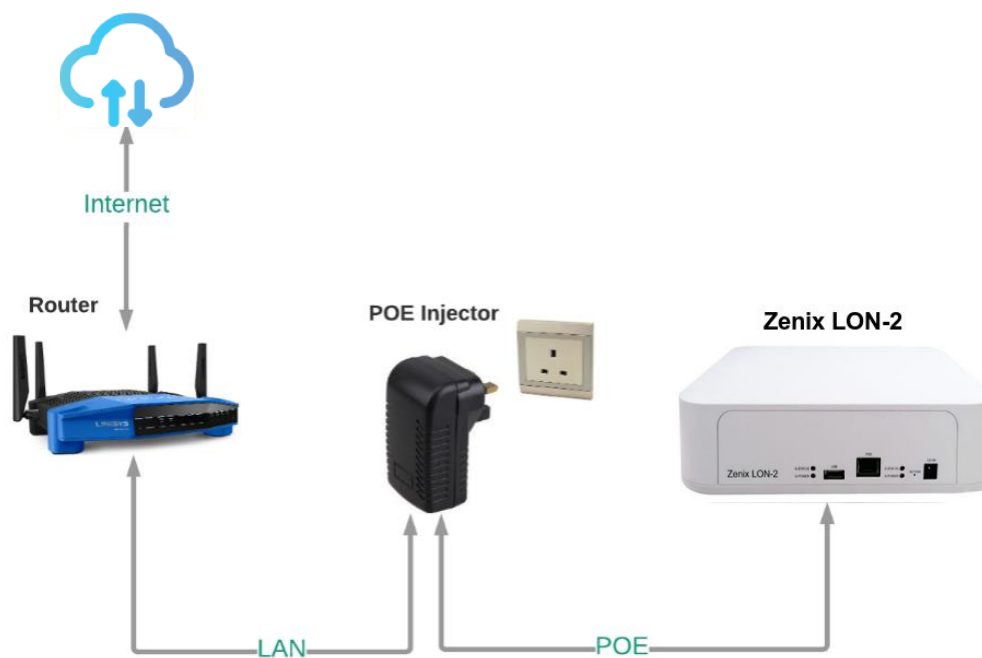


Figure 4 ZENIX LON-2 Wiring using POE Adapter

### 3.2. POE Switch

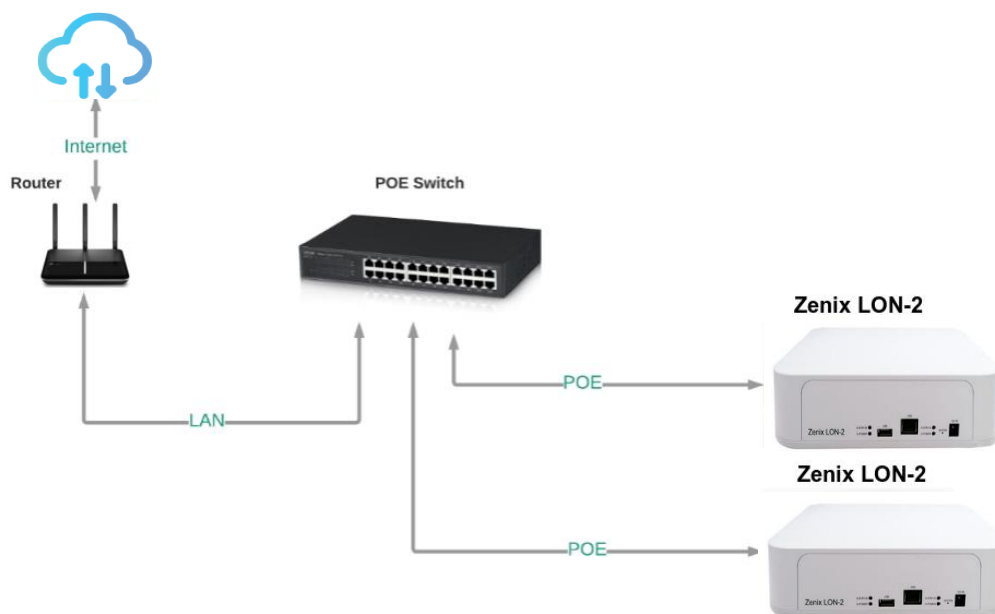


Figure 4 ZENIX LON-2 Wiring using POE Switch

## 4. Device Status

After 2 to 5 seconds ZENIX LON-2 Power LED will turn ON, indicating that device is now booting up.

Now wait for 1 to 2 minutes until the device gets boots up. Following is the status of device with respect to status LED on ZENIX LON-2.

Status LED (Green LED)	Rate	Description
OFF	OFF	System Booting Up
Blinking	3s ON, 3s OFF	Connecting to Internet
Blinking	1s ON, 1s OFF	Connecting to USB
ON	ON	Connected

## 5. ZENIX LON-2 Configuration

Follow the “[ZENIX LON-2 Configuration guide](#)” for the configuration.

### Disclaimer:

This guide is intended for informational purposes only. If in doubt at any stage of the installation or operation of the locator/gateway always consult Sentrax’s authorized dealer, distributor, or get in touch directly with Sentrax GmbH.

Given that Sentrax will continuously improve and develop the product, changes may be made to the information in this manual at any time without any obligation to notify any person of any such revisions or changes. Sentrax will make all possible efforts to secure the accuracy and integrity of this manual.

**Note:** Reproduction, transfer, distribution or storage of part or all the contents of this document in any form without the prior permission of Sentrax GmbH is prohibited.



CONNECT WITH US



[www.sentrax.com](http://www.sentrax.com)



[support@sentrax.com](mailto:support@sentrax.com)